

UTILITY

05

TIE-DOWNS



UTILITY TIE-DOWNS

UTILITY TIE-DOWNS

These 1" light-duty tie-downs can be used on pick-up trucks, utility trailers, car top racks, boat trailers. All ratchet straps are labeled to meet DOT regulations and WSTDA recommended standards.

Alternate hardware and custom lengths are available upon request

1" TIE-DOWN STRAPS, WEBBING B/S: 4,500 LBS

1" RATCHET STRAP WITH NARROW WIRE HOOK (18222)

STANDARD FIXED END LENGTH - 18"

WORKING LOAD LIMIT: 800 LBS (363 KGS)

ASSEMBLY BREAKING STRENGTH: 2,500 LBS (1,136 KGS)

STANDARD Colour: **BLUE**

Available Colours: Red / black / grey / white / gold / yellow / pink

PART NO.	STRAP LENGTH
RS11810-H	10 FT
RS11812-H	12 FT
RS11816-H	16 FT
RS11820-H	20 FT

1" RATCHET STRAP WITH WIRE HOOK (18220)

STANDARD FIXED END LENGTH - 18"

WORKING LOAD LIMIT: 1,000 LBS (454 KGS)

ASSEMBLY BREAKING STRENGTH: 3,000 LBS (1,363 KGS)

STANDARD Colour: **BLUE**

Available Colours: Red / black / grey / white / gold / yellow / pink

PART NO.	STRAP LENGTH
RS11810-W	10 FT
RS11812-W	12 FT
RS11816-W	16 FT
RS11820-W	20 FT

1" RATCHET STRAP WITH LONG WIRE HOOK (18221)

STANDARD FIXED END LENGTH - 18"

WORKING LOAD LIMIT: 1,100 LBS (500 KGS)

ASSEMBLY BREAKING STRENGTH: 3,300 LBS (1,500 KGS)

STANDARD Colour: **BLACK**

Available Colours: Blue / red / grey / white / gold / yellow / pink

PART NO.	STRAP LENGTH
RS11807-WXL	7 FT
RS11810-WXL	10 FT
RS11813-WXL	13 FT
RS11815-WXL	15 FT

1" RATCHET STRAP WITH WIRE HOOK+FLOATING D RING (18222+18280)

STANDARD FIXED END LENGTH - 18"

WORKING LOAD LIMIT: 800 LBS (363 KGS)

ASSEMBLY BREAKING STRENGTH: 2,500 LBS (1,136 KGS)

STANDARD Colour: **BLUE**

Available Colours: Red / black / grey / white / gold / yellow / pink

PART NO.	STRAP LENGTH
RS11810-HD	10 FT
RS11812-HD	12 FT
RS11816-HD	16 FT
RS11820-HD	20 FT

1" RATCHET STRAP WITH SNAP HOOK (18460)

STANDARD FIXED END LENGTH - 12"

WORKING LOAD LIMIT: 1,000 LBS (454 KGS)

ASSEMBLY BREAKING STRENGTH: 3,000 LBS (1,363 KGS)

STANDARD Colour: **RED**

Available Colours: Blue / black / grey / white / gold / yellow / pink

PART NO.	STRAP LENGTH
RS11210-SN	10 FT
RS11212-SN	12 FT
RS11216-SN	16 FT
RS11220-SN	20 FT

66

CTS

REFER TO FEDERAL, STATE, PROVINCIAL, INDUSTRY OR LOCAL REGULATIONS FOR PROPER TIE DOWN METHODS. IT IS THE OWNER'S AND USER'S RESPONSIBILITY TO DETERMINE SUITABILITY OF A PRODUCT FOR ANY PARTICULAR USE.

UTILITY TIE-DOWNS

1" TIE-DOWN STRAPS, WEBBING B/S: 4,500 LBS

1" RATCHET STRAP WITH S-HOOK (18160)

STANDARD FIXED END LENGTH - 12"

WORKING LOAD LIMIT: 800 LBS (363 KGS)

ASSEMBLY BREAKING STRENGTH: 2,500 LBS (1,136 KGS)

STANDARD Colour: **BLACK**

Available Colours: Red / black / grey / white / gold / yellow / pink

PART NO.	STRAP LENGTH
RS11210-S	10 FT
RS11212-S	12 FT
RS11216-S	16 FT
RS11220-S	20 FT

1" CAM STRAP WITH S-HOOK (18160+18231)

STANDARD FIXED END LENGTH - 12"

WORKING LOAD LIMIT: 600 LBS (272 KGS)

ASSEMBLY BREAKING STRENGTH: 1,800 LBS (818 KGS)

STANDARD Colour: **YELLOW**

Available Colours: Blue / black / grey / white / gold / red / pink

PART NO.	STRAP LENGTH
CS11210-S	10 FT
CS11212-S	12 FT
CS11216-S	16 FT
CS11220-S	20 FT

1" CAM STRAP WITH WIRE HOOK (18222+18231)

STANDARD FIXED END LENGTH - 18"

WORKING LOAD LIMIT: 600 LBS (272 KGS)

ASSEMBLY BREAKING STRENGTH: 1,800 LBS (818 KGS)

STANDARD Colour: **YELLOW**

Available Colours: Blue / black / grey / white / gold / red / pink

PART NO.	STRAP LENGTH
CS11810-H	10 FT
CS11812-H	12 FT
CS11816-H	16 FT
CS11820-H	20 FT

1" INFLATABLE TIE-DOWN STRAPS

1" LIGHT DUTY CAM STRAP WITH SWIVEL SNAP HOOK (38130+18240)

WORKING LOAD LIMIT: 50 LBS (22 KGS)

ASSEMBLY BREAKING STRENGTH: 150 LBS

Webbing Breaking Strength: 2,500 lbs

STANDARD FIXED END LENGTH - 6"

Colours: **WHITE** (standard)

Red / blue / black / grey / yellow

PART NO.	STRAP LENGTH	COLOUR
IFS10610	10 FT	WHITE
IFS10620	20 FT	WHITE

1" CAM STRAP WITH CARIBINER HOOK (73000+18231)

FIXED END LENGTH: 36"

Working Load Limit: 250 lbs (113 kgs)

Assembly Breaking Strength: 770 lbs (350 kgs)

1" cam buckle tiedown straps for inflatable, also available in other colours and lengths.

1" CAM STRAP WITH CARIBINER HOOK (73000+18231)

FIXED END LENGTH: 36"

Working Load Limit: 250 lbs (113 kgs)

Assembly Breaking Strength: 770 lbs (350 kgs)

1" cam buckle tiedown straps for inflatable, also available in other colours and lengths.

PART NO.	STRAP LENGTH	COLOUR
IFS13615-Y	15 FT	YELLOW
IFS13620-R	20 FT	RED
IFS13625-BK	25 FT	BLACK
IFS13630-BK	30 FT	BLACK
IFS13640-BK	40 FT	BLACK
IFS13650	50 FT	BLUE
IFS13675	75 FT	RED
IFS136100-BK	100 FT	BLACK

67

CTS

ALL STRAP ASSEMBLIES OR SYSTEMS ARE AS STRONG AS THEIR WEAKEST COMPONENT INCLUDING THE POINT OF ATTACHMENT. NEVER EXCEED THE WORKING LOAD LIMIT (WLL). LOADS BEYOND ITS WLL CAN RESULT IN SERVERE PERSONAL INJURY OR DEATH.

68

General Information

Webbing

Hardware

Rigging Hardware

Slings

Interior Van Products

Auto Tiedowns

Utility Tiedowns

Tiedown Straps

Flatbed Accessories

Truck Equipment

Safety & Accessories



UTILITY TIE-DOWNS

1" ENDLESS TIE-DOWNS

1" ENDLESS OVERCENTER CAM STRAP

WORKING LOAD LIMIT: 250 LBS (113 KGS)
ASSEMBLY B/S: 750 LBS (340 KGS)
Overcenter Cam Buckle: **18232**
Webbing: 500 lbs
STANDARD Colour: **BLACK**
Available Colours: Blue / white / red

PART NO.	STRAP LENGTH
EOC108	8 FT
EOC110	10 FT
EOC112	12 FT
EOC116	16 FT

1" ENDLESS OVERCENTER BUCKLE STRAP

WORKING LOAD LIMIT: 250 LBS (113 KGS)
ASSEMBLY B/S: 750 LBS (340 KGS)
Overcenter Buckle: **81100**
Webbing: 2,500 lbs
STANDARD Colour: **BLACK**
Available Colours: Blue / white / red

PART NO.	STRAP LENGTH
EO110	10 FT
EO112	12 FT
EO116	16 FT
EO120	20 FT

1" ENDLESS CAM STRAP

WORKING LOAD LIMIT: 600 LBS (272 KGS)
ASSEMBLY B/S: 1,800 LBS (818 KGS)
Cam Buckle: **18231**
Webbing: 4,500 lbs
STANDARD Colour: **BLUE**
Available Colours: Black/ white/red/grey/pink

PART NO.	STRAP LENGTH
EC110-HC	10 FT
EC112-HC	12 FT
EC116-HC	16 FT
EC120-HC	20 FT

1" ENDLESS RATCHET STRAP

WORKING LOAD LIMIT: 1,100 LBS (500 KGS)
ASSEMBLY B/S: 3,300 LBS (1,500 KGS)
Ratchet Buckle: **70144**
Webbing: 4,500 lbs
STANDARD Colour: **BLUE**
Available Colours: Black/ white/red/grey/pink

PART NO.	STRAP LENGTH
ER107	7 FT
ER110	10 FT
ER112	12 FT
ER116	16 FT
ER120	20 FT

Custom lengths are available upon request

TENT TIE-DOWN STRAPS







PART NO.	DESCRIPTION	WORKING LOAD LIMIT (LBS)
RS12412-OL	1" X 12FT. with O ring on fixed end and 5" loop on adjustable end	1,000 LBS
RS12415-L-W	1" x15FT. with 5" loops on each end	1,500 LBS
RS12412-LE	1" X 12FT. with 5" loop on adjustable end, forged snap hook on fixed end	1,000 LBS
RS21816-WXL-WHT	2" X 16FT. with wire hooks	3,335 LBS

TENT TIE-DOWN STRAPS
White ratchet straps are excellent for securing a variety of special event tents and canopies.
• 1" or 2" white polyester webbing
Working Load Limit 1,000LBS - 3335LBS
Custom lengths are available upon request.
Custom stenciling available upon request.

68

CTST

REFER TO FEDERAL, STATE, PROVINCIAL, INDUSTRY OR LOCAL REGULATIONS FOR PROPER TIE DOWN METHODS. IT IS THE OWNER'S AND USER'S RESPONSIBILITY TO DETERMINE SUITABILITY OF A PRODUCT FOR ANY PARTICULAR USE.

69

General Information

Webbing

Hardware

Rigging Hardware

Slings

Interior Van Products

Auto Tiedowns

Utility Tiedowns

Tiedown Straps

Flatbed Accessories

Truck Equipment

Safety & Accessories

SEAT BELT RESTRAINTS

SEAT BELT RESTRAINTS

Alternate hardware and custom lengths are available upon request
Standard colour: Black
Custom colours : Red, Blue, Grey, Yellow



PART NO.	O/A LENGTH	FIXED END	ADJ. END
FO6026	54"	13"	41"
FO6031	60"	24"	36"
FO6025	64"	13"	51"
FO6033	72"	27"	45"
FO6018	90"	27"	63"

2 - POINT LAP BELT
• These lap belts are easy to install and are 2 point push button seat belts that adjust to a maximum of 90, 64, 54, 60 or 72 inches total length.
• Our 110 inch replacement lap belt is great for some motorhome seat belt applications.
• These 2 point seatbelts are lap belts only (no shoulder harness), NON-Retractable and are universal fit. So they will fit perfectly on most cars.



FO6612
2-POINT RETRACTABLE LAP BELT, O/A Length 54"
Fixed end 9" + 45" Adjustable end
2 point retractable seatbelts lap belt only with buckle (no shoulder harness). These are universal fit, so they are perfect for most cars or vehicles. Standard colour: Black



FO6613
3-POINT RETRACTABLE LAP/SHOULDER BELT, O/A Length 137"
Fixed end 12" + 125" Adjustable end
• Spring-activated buckle provides easy access and quick release.
• Replaces worn original belt using factory fittings.
• Installs easily in cars, trucks or van without original belts with included mounting hardware and instructions.
• Features locking retractor. Ensures complete freedom of movement.
Standard colour: Black

4-POINT RACING HARNESS WITH SHOULDER PAD
For Go-Karts and Adult Rides

4 Point Racing Harness with Shoulder Pad to prevent rider discomfort caused by the seat belt rubbing against the neck and shoulder areas.
Standard colour: Black



FO6614 ADULT (BLUE TAB)
FO6615 CHILD (YELLOW TAB)
* Custom lengths are available upon request



ALL STRAP ASSEMBLIES OR SYSTEMS ARE AS STRONG AS THEIR WEAKEST COMPONENT INCLUDING THE POINT OF ATTACHMENT. NEVER EXCEED THE WORKING LOAD LIMIT (WLL). LOADS BEYOND ITS WLL CAN RESULT IN SERVEE PERSONAL INJURY OR DEATH.

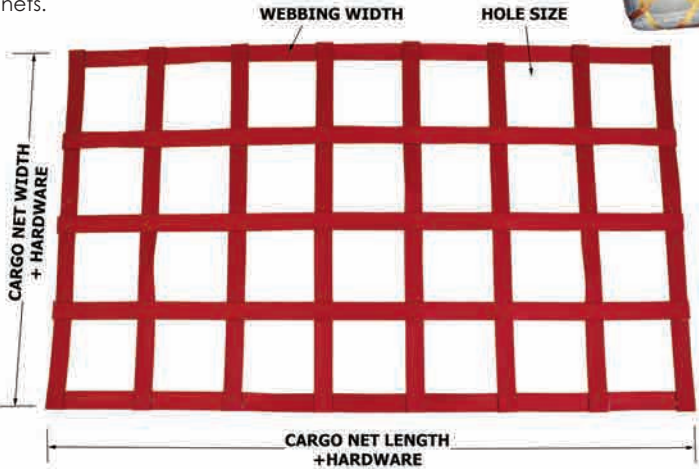
CTST

CUSTOM CARGO NETS

Safety & Accessories
Truck Equipment
Flatbed Accessories
Tiedown Straps
Utility Tiedowns
Auto Tiedowns
Interior Van Products
Slings
Rigging Hardware
Hardware
Webbing
General Information
70

CTS custom designs and manufactures a wide variety of web nets for interior car, van, truck and trailer. Custom nets are tailored to fit each application resulting in a highly effective load securing system.

WARNING: All nets must be secured properly with proper hardware. It is the responsibility of installer to secure nets for proper weights and applications. We are NOT responsible for any installations or bodily harm caused by improper use of nets.



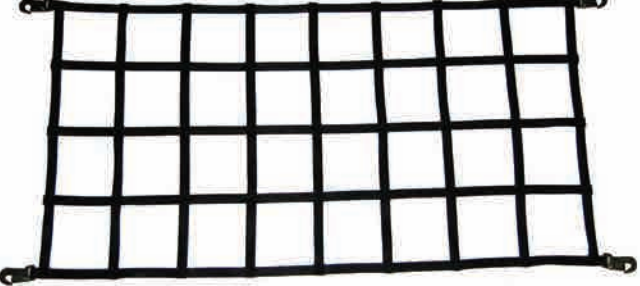
HOW TO ORDER:

- Specify 1" or 2" webbing width
- Specify the WIDTH x LENGTH of the cargo net
- Specify the size of the SQUARE HOLE opening (space between webbing), 2"x2", 3"x3", 4"x4", 5"x5".....
- Optional add sewn-in hardware, O-rings, snap hooks. (see our hardware section for selection)
- Make your cargo net adjustable by selecting ratchets or cam buckles to be included on your cargo net.

All cargo nets are custom-made and all sales are final

1" - 2" WEBBING CUSTOM CARGO NETS

STYLE 1



CARGO NET WITH SNAP HOOK ON 4 CORNERS
WORKING LOAD LIMIT:
1" WEBBING = 600 LBS (272KGS)
2" WEBBING = 1,000 LBS (454KGS)



STYLE 2

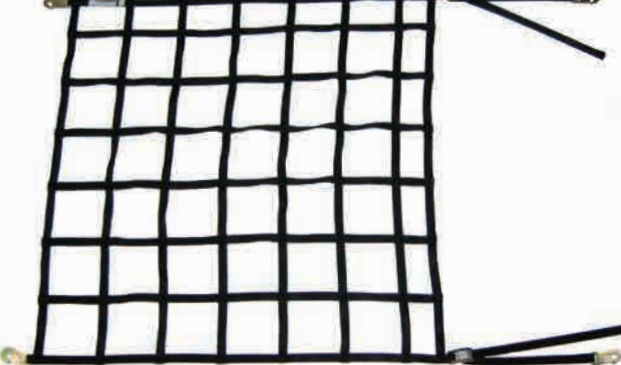


MESH CARGO NET WITH SNAP HOOK ON 4 CORNERS + RATCHET BUCKLE FOR ADJUSTMENT OF 18"-24"

WORKING LOAD LIMIT:
1" WEBBING = 600 LBS (272 KGS)
2" WEBBING = 1,000 LBS



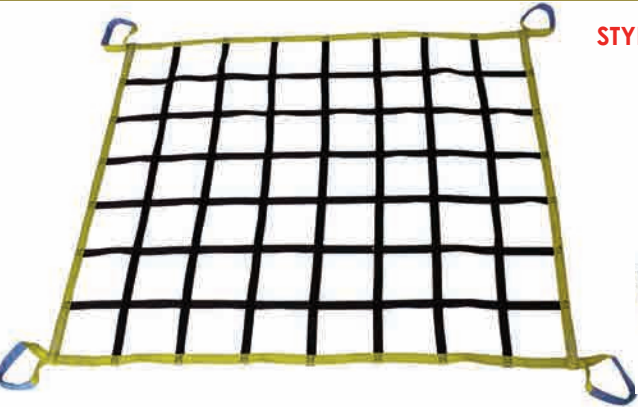
STYLE 3



CARGO NET WITH SNAP HOOK ON 4 CORNERS + CAM BUCKLE FOR ADJUSTMENT OF 18"-24"
WORKING LOAD LIMIT: 1" WEBBING = 600 LBS (272KGS)
2" WEBBING = 1,000 LBS (454KGS)

CUSTOM CARGO NETS

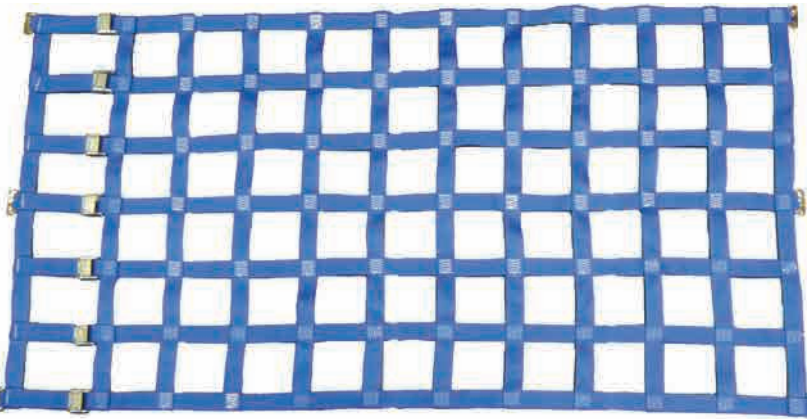
1" - 2" WEBBING LIFTING CARGO NETS



STYLE 4 LIFTING CARGO NET WITH 8" LOOPS ON 4 CORNERS
WORKING LOAD LIMIT:
1" WEBBING =1,000 LBS (454KGS)
2" WEBBING = 2,000 LBS (909KGS)



CUSTOM INTERIOR TRAILER CARGO NETS



STYLE 5 - CARGO NET WITH SPRING E FITTINGS AND CAM BUCKLES FOR ADJUSTMENT OF 6" - 8"

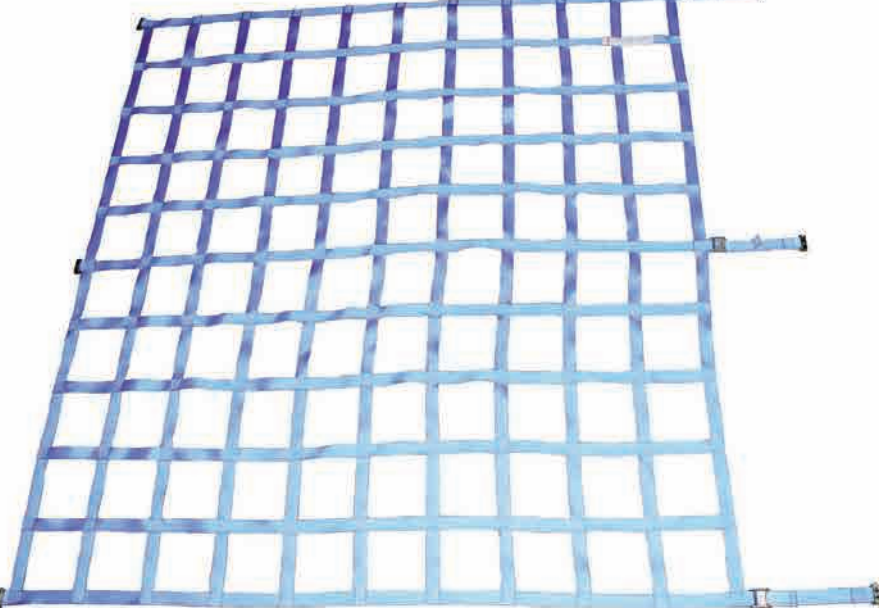
- 2" x 6,000 lbs webbing
- Cargo net for logistic van/trailers.
- Quick release, restrain more freight and give extra support to secure cargo in place.
- Works great as cargo divider if you have a few stops.
- Cargo Nets are assembled with either Ratchets or Cam Buckles

WORKING LOAD LIMIT: 1,000 LBS (454 KGS)
Colours: Red/yellow/blue/grey

STYLE 6 - HEAVY DUTY CARGO NET WITH SPRING E FITTINGS AND CAM BUCKLES WITH ADJUSTMENT OF 12" - 18"

- 2" x 10,000 lbs webbing
- Cargo net for logistic van/trailers.
- Quick release, restrain more freight and give extra support to secure cargo in place
- Works great as cargo divider if you have multiple stops.
- Cargo Nets are assembled with either Ratchets or Cam Buckles

WORKING LOAD LIMIT: 2,000 LBS (909 KGS)
Colours: Yellow/red/blue/grey



Safety & Accessories
Truck Equipment
Flatbed Accessories
Tiedown Straps
Utility Tiedowns
Auto Tiedowns
Interior Van Products
Slings
Rigging Hardware
Hardware
Webbing
General Information
71

CUSTOM CARGO NETS

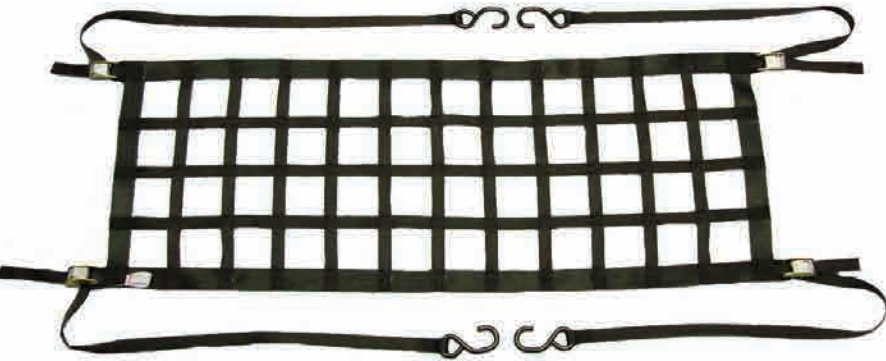
ADJUSTABLE TAILGATE CARGO NETS

STYLE 7 - ADJUSTABLE TAILGATE CARGO NET WITH S-HOOKS

- Universal innovative design fits most trucks.
- The universal design allows you to extend your truck bed for multiple uses such as hauling motorcycles and other larger cargo that is too big with your tailgate up.
- 54" x 19" tailgate net has 4 S-hook that are adjustable up to 40" (20" on each side) to fit any truck without sagging.
- Cargo Nets are assembled with either RATCHET or CAM buckles.

WORKING LOAD LIMIT: 1,000 LBS (454 KGS)

Colours: Black / red / yellow / blue / grey / pink



CUSTOM INTERIOR VAN CARGO NETS



STYLE 8 - CUSTOM INTERIOR VAN CARGO NET WITH SINGLE STUD FITTINGS

- Custom design fits any cargo or passenger van
- 1" x 4,500 lbs webbing
- come with single studs fitting for quick release
- Can be use as cargo barrier
- Cargo Nets are assembled with either RATCHETS or CAM buckles

WORKING LOAD LIMIT: 1,000 LBS (454 KGS)

Colours: Red / yellow / blue / grey / white / pink / black

CUSTOM AJUSTABLE HEAVY DUTY CARGO NETS

STYLE 9 - CUSTOM ADJUSTABLE HEAVY DUTY CARGO NET WITH SNAP HOOKS

- 2" x 12,000 lbs polyester cargo webbing
- Adjustable for ALL pickup trucks
- Safely secures cargo inside back of pickup truck
- Adjusts in two ways - drop down section allows net to fit long or short pickup beds.
- Adjust cross-straps to fit wide or narrow beds
- Holds up under extreme weather conditions

WORKING LOAD LIMIT: 2,000 LBS (909 KGS)

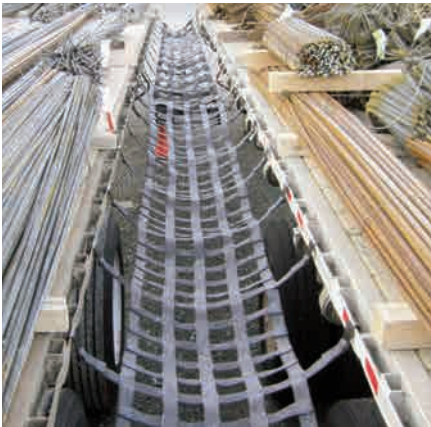
Colours: Red/yellow/blue/grey/green/white



Alternate hardware are available upon request

CUSTOM CARGO NETS

CUSTOM SAFETY NETS



STYLE 10 - SAFETY NETS ARE TAILORED TO FIT EACH APPLICATION

WORKING LOAD LIMIT: 3,335 LBS (1,515 KGS)

Webbing: 2" x 12,000 lbs

Colours: Red / yellow / blue / grey / white / pink / black

*Looking for more Information?
Do you have additional questions?
Contact our netting specialist for more details.*

CUSTOM 3-D PALLET CARGO NETS

STYLE 12 - CUSTOM PALLET CARGO NET WITH CAM BUCKLES

1" WEBBING

WORKING LOAD LIMIT: 1,000 LBS (454 KGS)

2" WEBBING

WORKING LOAD LIMIT: 3,335 LBS (1,515 KGS)

Colours: Red / yellow / blue / grey / white / black

- Adjustable design fits any pallet skid 4' x 4' and up to 6' high
- 1" or 2" webbing
- comes with cam buckle x 4 corners with adjustment.

Cargo nets are seen as no more than a device to stop the load from falling off the pallet during transportation.

Cargo nets need to be treated with sufficient care to prevent unnecessary damage



NET INSTALLATION

The installation of any cargo net onto a loaded pallet must follow a defined set of steps:

1. Place the net evenly over the load with the sides of the net hanging down equally on all four sides.
2. Close the corners of the net by pulling the handle loops on the cam buckle. The adjacent sides of the net should be brought together as evenly as possible. When this operation is completed, the end of the lashing line or lashing loops is secured.
3. On properly netted load, the net should be just tight enough to be secure and not able to move around. It should not be tightened such that it raises the edges of the pallet or that it damages the cargo loaded on the pallet.



ALL STRAP ASSEMBLIES OR SYSTEMS ARE AS STRONG AS THEIR WEAKEST COMPONENT INCLUDING THE POINT OF ATTACHMENT. NEVER EXCEED THE WORKING LOAD LIMIT (WLL). LOADS BEYOND ITS WLL CAN RESULT IN SERVE PERSONAL INJURY OR DEATH.

CTS

CUSTOM CARGO NETS

CUSTOM BAGGAGE CARGO NETS FOR CESSNA

NET-3-2830

BAGGAGE CARGO NET FOR CESSNA 172

A single throw-over "floor-to-floor" front-loading baggage area net that attaches to ring and stud fittings on the top, middle and bottom end.

39"H X 42"L with 6"x6" square strips + mesh material underneath, 3 x adjustable strap with cam buckle (18240) + wire hook (18130)

WORKING LOAD LIMIT: 250LBS

Colours: Red / Yellow / Blue / Grey / Green / White / Black / Pink

Alternate hardware and sizes are available upon request



CUSTOM BAGGAGE CARGO NETS FOR SUPERCUB

NET1184022-03

SUPERCUB BAGGAGE CARGO NET

- 18" top width with snap hook(18460) on both side (left/ right)
- 40" height with snap hook(18460) install on 20" (middle) left/ right
- 22" width on bottom with ratchet (70144) + snap hook on left/ right with 24" adjustable tail end.
- Mesh opening: 3" x 3"

WORKING LOAD LIMIT 1,000 LBS

Colours: Red / Yellow / Blue / Grey / Green / White / Black / Pink

Alternate hardware and sizes are available upon request



CUSTOM HEAVY DUTY UTILITY CARGO NETS

STYLE 11 - CUSTOM CARGO NET WITH SNAP HOOKS + CAM BUCKLES

- Custom design fits any cargo van or truck
- 1" x 4,500lbs webbing
- come with snap hooks for quick release
- Can be use as cargo barrier
- Cargo Nets are assembled with either RATCHETS or CAM buckles

WORKING LOAD LIMIT: 1,000 LBS (454 KGS)

Colours: Red / yellow / blue / grey / pink / black

